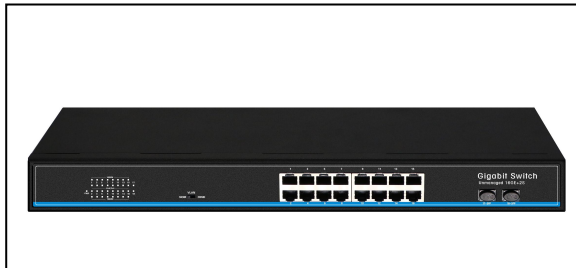


Front



Back



Model	G162GS
Product	Full Gigabit 16+2 Ethernet Switch
Fixed port	16*10/100/1000Base-TX RJ45 port (Data) 2*1000M SFP
Function	N:(Standard normal) V:(Port isolation) C:(Flow Control mode)
Network Protocol	IEEE 802.3 IEEE 802.3i 10BASE-T IEEE 802.3u 100BASE-TX IEEE 802.3ab 1000BASE-T IEEE 802.3z 1000BASE-X IEEE 802.3x IEEE 802.1q
Port Specification	10/100/1000BaseT(X) Auto
Transmission Mode	Store and Forward(full wirespeed)
Bandwidth	56Gbps
Packet Forwarding	40.32Mpps Supports 9K jumbo frame transmission
MAC Address	8K
Buffer	4.1M
Transmission Distance	10BASE-T : Cat3,4,5 UTP(≤250 meter) 100BASE-TX : Cat5 or later UTP(150 meter) 1000BASE-TX : Cat6 or later UTP(150 meter) 1000BASE-SX:62.5μm/50μm MMF(2m~550m) 1000BASE-LX:62.5μm/50μm MM(2m~550m) or 10μm SMF(2m~5000m)
Watt	Standby Power Consumption: ≤20W;
LED Indicator	PWR:Power LED 1-16:(Link LED=10/100M Link、1000M=Gigabit Link) 17 18:(SFP LED)
Power Input	Built-in Power AC: 100 ~ 240V 50-60Hz 1A
Operating Temperature/Humidity	-10 ~ +55°C; 5% ~ 90% RH Non coagulation
Storage Temperature/Humidity	-40 ~ +75°C; 5% ~ 95% RH Non coagulation

Product size/Packing size (L*W*H)	440mm*140mm*45mm 513mm*220mm*95mm
N.W/G.W (kg)	1.6kg/2.2kg
Installation	Rack-mount(optional machine hanger spare parts)
Lightning protection level	3KV 8/20us; IP30
Certificate	CE mark, commercial; CE/LVD EN60950; FCC Part 15 Class B; RoHS;
Warranty	Whole device for 1 year (Accessories not included)