

Smart—Web Switches

G2402GSM/POE—G2402GSM

Web Manual

Ver. 1.0

Revision history

Date	Version	Description
Apr. 14, 2023	V 1.0	The first edition

Contents

Smart-Web Switches	1
G2402GSM/POE-G2402GSM	1
Web Manual	1
Ver. 1.0	1
Contents	3
1 Foreword	5
1.1 Target Audience	5
1.2 Manual Convention	5
2 Web Page Login	5
2.1 Log in the Network Management Client	5
2.2 Constitution of Client Interface	6
2.3 Navigation Bar on Web Interface	6
3 System	8
3.1 Information	8
3.2 IP Setting	8
3.3 User Account	9
3.4 Port Setting	9
4 POE	10
4.1 System	11
4.2 Port	11
5 Configuration	12
5.1 VLAN	12
5.1.1 Port VLAN	13
5.1.2 802.1Q VLAN	13
5.2 QOS	14
5.2.1 Port to Queue	16
5.2.2 Queue Weight	17
5.3 Loop	17
5.3.1 Loop Prevention	18

5.3.2 STP global	18
5.3.3 STP port	19
5.4 IGMP Snooping	20
5.5 SNMP	21
5.6 Trunk Group Setting	22
5.7 Port-based Mirroring	24
5.8 Port Isolation	25
5.9 Bandwidth Control	25
5.10 Jumbo Frame	26
5.11 MAC Constraint	27
5.12 EEE	27
6 Security	28
6.1 MAC Address	28
6.1.1 MAC Search	28
6.1.2 Static MAC	29
6.2 Storm Control	29
7 Monitoring	30
7.1 Port Statistics	30
8 Tool	31
8.1 Firmware Upgrade	31
8.2 Configuration Backup	32
8.3 Reset	32
8.4 Save	32
8.5 Reboot	33


1 Foreword

1.1 Target Audience

This manual is prepared for the installers and system administrators who are responsible for network installation, configuration and maintenance. It assumes that the user has understood all network communication and management protocols, as well as the technical terms, theoretical principles, practical skills, and expertise of devices, protocols and interfaces related to networking.

1.2 Manual Convention

The following approaches should prevail.

GUI Convention	Description
Interpretation	Describe operations and add necessary information.
 Notice	Remind the user of cautions as improper operations will result in data loss or equipment damage.

2 Web Page Login

2.1 Log in the Network Management Client

Type in the default switch address: **http://192.168.2.1** and press "Enter".



Description:

Browser standards: superior to IE 9.0, Chrome 23.0 and Firefox 20.0

Keep the IP network segment of PC consistent with that of switch but differentiate the IP address as you log in. Set PC's IP address of 192.168.2.x and the subnet mask of 255.255.255.0 for the first login ($1 < x \leq 254$).

A login window appears as follows. Type in the default username of "**admin**" and the password of "**admin**". Click the "Log in" to see the switch system.

2.2 Constitution of Client Interface

The typical operation interface of Web network management system is as follows.

System information	
Device model	ZX-SWGW20242S
MAC address	00:E0:4C:00:00:00
IP address	192.168.2.1
Subnet mask	255.255.255.0
Gateway	192.168.2.254
Firmware Version	V2.4
Firmware Date	2023/04/12
Hardware Version	V1.0

2.3 Navigation Bar on Web Interface

Menu items such as System, Configuration, Security, Monitoring, and Tools are available on the web network management client. Each item contains submenus. Navigation bar is detailed as follows:

Menu Items	Submenus	Secondary Submenus	Description
System	Information		Display the port state and product info
	IP Setting		Configure and view the management IP address
	User Account		Configure and view the management account
	Port Setting		Configure and view all ports

POE	System		View the current Poe output power
	Port		Configure and View Poe Port Status
Configuration	VLAN	Port VLAN	Configure and view the Port VLAN
		802.1Q VLAN	Configure and view the VLAN
		802.1Q PVID	Configure and view the PVID of port
	QOS	Port to Queue	Configure and view the priority selection setting
		Queue Weight	Queue Weight
	Loop	Loop Prevention	Configure and view Loop Prevention
		STP global	Configure and view STP global
		STP port	Configure and view STP port
	IGMP Snooping		Configure and view the igmp snooping
	SNMP		Configure and view the trunk groups
	Trunk Group Setting		Configure and view theTrunk Group Setting
	Port-based Mirroring		Configure and view the port mirror
	Port Isolation		Configure and view the port isolation
	Bandwidth Control		Configure and view the port rate-limit
	Jumbo Frame		Configure and view the length of the max message forwarded by system
	MAC Constraint		Configure and view the MAC limit
	EEE		Configure and view the EEE state and information
	MAC Address	MAC Search	Configure and view the dynamic MAC addresses
		Static MAC	Configure and view the static MAC address
	Storm Control		Configure and view the port storm policing
Monitoring	Port Statistics		Display the port statistics
Tools	Firmware Upgrade		Update software
	Configuration Backup		Update and save configuration files
	Reset		Restore factory settings
	Save		Save configuration
	Reboot		Restart system

3 System

3.1 Information

Display system information, including model, version, MAC, etc.
Instructions:

1. Click the “System > Information” in the navigation bar as follows:

System information

Device model	HR-SWGW20242S
MAC address	00:E0:4C:00:00:00
IP address	192.168.2.1
Subnet mask	255.255.255.0
Gateway	192.168.2.254
Firmware Version	V2.4
Firmware Date	2023/04/12
Hardware Version	V1.0

3.2 IP Setting

Change the management IP address on web interface

1. Click the “System > IP Setting” in the navigation bar as follows:

IP address

DHCP Settings	Disable ▼
IP address	192.168.2.1
Subnet mask	255.255.255.0
Gateway	192.168.2.254

Apply

Interface data are as follows.

Query Items	Description
DHCP Setting	Enable: Enable DHCP client in system Disable: Disable DHCP client
IP Address	Manager IP address
Subnet Mask	Manager IP mask
Gateway	Manager IP default gateway

3.3 User Account

Users can check and modify the current username and password of the switch.

Instructions:

1. Click the “System > User Account” in the navigation bar as follows:

User Account Setting

User Name	admin
New Password	
New Password	

Apply

Interface data are as follows.

Query Items	Description
New Username	New Username
New Password	New Password
Retry Password	Enter the new user name again

3.4 Port Setting

Querying and configuring Ethernet ports.

Instructions:

1. Click the “System > Port Setting” in the navigation bar as follows:

Port Setting

PORT	STATUS	SPEED_DUPLEX	FLOW_CONTROL
Port 1			
Port 2			
Port 3			
Port 4	Enable	Auto	Off
Port 5			
Port 6			

Apply

PORT	STATUS	SPEED_DUPLEX		FLOW_CONTROL	
		CONFIG	ACTUAL	CONFIG	ACTUAL
Port 1	Enable	AUTO	LINK_DOWN	OFF	OFF
Port 2	Enable	AUTO	LINK_DOWN	OFF	OFF
Port 3	Enable	AUTO	LINK_DOWN	OFF	OFF
Port 4	Enable	AUTO	LINK_DOWN	OFF	OFF
Port 5	Enable	AUTO	1000M/FULL	OFF	OFF
Port 6	Enable	AUTO	LINK_DOWN	OFF	OFF
Port 7	Enable	AUTO	LINK_DOWN	OFF	OFF
Port 8	Enable	AUTO	LINK_DOWN	OFF	OFF
Port 9	Enable	AUTO	LINK_DOWN	OFF	OFF
Port 10	Enable	AUTO	LINK_DOWN	OFF	OFF

Interface data are as follows.

Query Items	Description
Name	Port description
State	Enable or disable port
Speed/Duplex	Configure the rate and negotiation status of the port. You can configure the forced 10M/Half, 10M/Full, 100M/Half and 100M/Full
Flow Control	<p>After it is enabled on both local network and opposite network devices, the local one will notify the other to stop transmitting messages in the presence of network congestion. The opposite one will execute the command temporarily to ensure zero message loss.</p> <p>Off—Disabled reception and transmission of PAUSE frame;</p> <p>On—Enabled reception and transmission of PAUSE frame;</p>

4 POE

PoE (Power over Ethernet) transmits data signal for the terminals based on IP (e.g. IP phone, WAP, and IP camera) and supplies the devices with direct current, without changing the existing Cat-5 network cabling status. It ensures safe structured cabling and normal network operation to minimize the cost.

4.1 System

Configure and view the power and consumption of the PSE of the device.

Operation steps:

1. Click the “System >POE> System” in the navigation bar as follows:

PSE System Settings

Consumption (watt)	1.560
--------------------	-------

Apply

4.2 Port

Configure and view the port POE of the device.

Operation steps:

1. Click the “System >POE> Port” in the navigation bar as follows:

PSE Port Settings

Port	State
Port 1	
Port 2	
Port 3	
Port 4	Disable
Port 5	Disable
Port 6	Enable

Apply

Port	State	Power On/Off	Type	Power(w)	Voltage(v)	Current(ma)
Port 1	Enable	Off	-	-	-	-
Port 2	Enable	Off	-	-	-	-
Port 3	Enable	Off	-	-	-	-
Port 4	Enable	Off	-	-	-	-
Port 5	Enable	Off	-	-	-	-
Port 6	Enable	Off	-	-	-	-
Port 7	Enable	Off	-	-	-	-
Port 8	Enable	Off	-	-	-	-
Port 9	Enable	Off	-	-	-	-
Port 10	Enable	Off	-	-	-	-
Port 11	Enable	On	Class3	2.28	52	39
Port 12	Enable	Off	-	-	-	-

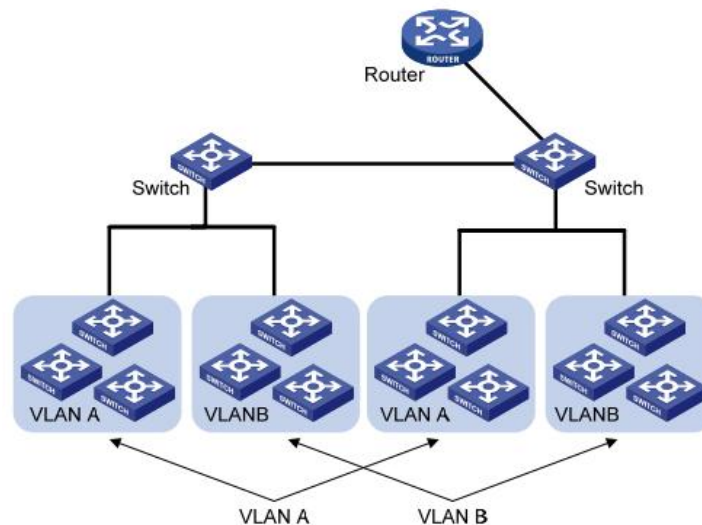
Interface data are as follows.

Query Items	Description
Port	Port list
State	Enable/Disable Poe port power

5 Configuration

5.1 VLAN

VLAN is formulated not restricted to physical locations, which means the hosts in a same VLAN can be placed at will. As shown below, each VLAN, as a broadcast domain, divides a physical LAN into logical LANs. Hosts can exchange messages by means of traditional communication. For the hosts in different VLANs, the device such as router or L3 switch is a must.



VLAN is superior to the traditional Ethernet in terms of:

- Broadcast domain coverage: the broadcast message in a LAN is limited in a VLAN to save the bandwidth and handle the network-related issues more efficiently.
- LAN security: VLAN hosts fail to communicate with each other since the messages are separated by the broadcast domain in the data link layer. They need a router or a Layer 3 switch for Layer 3 forwarding.
- Flexibility of creating a virtual working team: VLAN can create a virtual working team beyond the control of physical network. Users have access to the network without changing the configuration if their physical locations are moving within the scope. This management switch is compatible with VLAN types based on 802.1Q, protocols, MAC, and ports. For default configuration, 802.1Q VLAN mode should be adopted. Port VLAN is divided subject to a switch's interface No. Network administrator gives each switch interface a different PVID, namely a port default VLAN. If a data frame without a VLAN tag flows into a switch interface with a PVID, it will be marked with the same PVID, or it will get rid of an additional tag even though the interface has a PVID.
- The solution to a VLAN frame depends on the interface type, which eases member definition but re-configures VLAN in case of member mobility.

5.1.1 Port VLAN

Port VLAN is a vlan division based on ports. Data is forwarded only on the same port VLAN. The packets sent by tx are the same as those received by rx

1. Click the "Configuration > VLAN > Port VLAN", in the navigation bar as follows:

VLAN Port Setting

Port VLAN ☐ ON ☒ OFF

Note: 802.1Q VLAN becomes unavailable when port VLAN is enabled.

VLAN	2 (2-32)															
Port	1	2	3	4	5	6	7	8	9	10	11	12	13			
Member	<input type="checkbox"/>	<input type="checkbox"/>	<input type="checkbox"/>	<input type="checkbox"/>	<input type="checkbox"/>	<input type="checkbox"/>	<input type="checkbox"/>	<input type="checkbox"/>	<input type="checkbox"/>	<input type="checkbox"/>	<input type="checkbox"/>	<input type="checkbox"/>	<input type="checkbox"/>	<input type="checkbox"/>	<input type="checkbox"/>	
Port	14	15	16	17	18	19	20	21	22	23	24	25	26			
Member	<input type="checkbox"/>	<input type="checkbox"/>	<input type="checkbox"/>	<input type="checkbox"/>	<input type="checkbox"/>	<input type="checkbox"/>	<input type="checkbox"/>	<input type="checkbox"/>	<input type="checkbox"/>	<input type="checkbox"/>	<input type="checkbox"/>	<input type="checkbox"/>	<input type="checkbox"/>	<input type="checkbox"/>	<input type="checkbox"/>	

(Maximum support: 32)

VLAN	VLAN Member	Delete
1	1-26	<input type="button" value="Delete VLAN"/>

Interface data are as follows

Configuration Items	Description
Port VLAN	This function is disabled by default. If this function is enabled, 802.1Q VLAN does not take effect
VLAN ID	It is required to select an ID ranging from 1 to 32



Note:

- This function is disabled by default. If this function is enabled, 802.1Q VLAN does not take effect

5.1.2 802.1Q VLAN

The Settings page is equivalent to the Hybrid interface

1. Click the "Configuration > VLAN > 802.1Q VLAN", in the navigation bar as follows:

802.1Q VLAN

VLAN	2-4094													VLAN Name	
PORT	Select all	1	2	3	4	5	6	7	8	9	10	11	12	13	
Untagged	All	<input type="radio"/>	<input type="radio"/>	<input type="radio"/>	<input type="radio"/>	<input type="radio"/>	<input type="radio"/>	<input type="radio"/>	<input type="radio"/>	<input type="radio"/>	<input type="radio"/>	<input type="radio"/>	<input type="radio"/>	<input type="radio"/>	
Tagged	All	<input type="radio"/>	<input type="radio"/>	<input type="radio"/>	<input type="radio"/>	<input type="radio"/>	<input type="radio"/>	<input type="radio"/>	<input type="radio"/>	<input type="radio"/>	<input type="radio"/>	<input type="radio"/>	<input type="radio"/>	<input type="radio"/>	
Non-member	All	<input checked="" type="radio"/>	<input checked="" type="radio"/>	<input checked="" type="radio"/>	<input checked="" type="radio"/>	<input checked="" type="radio"/>	<input checked="" type="radio"/>	<input checked="" type="radio"/>	<input checked="" type="radio"/>	<input checked="" type="radio"/>	<input checked="" type="radio"/>	<input checked="" type="radio"/>	<input checked="" type="radio"/>	<input checked="" type="radio"/>	
PORT	Select all	14	15	16	17	18	19	20	21	22	23	24	25	26	
Untagged	ALL	<input type="radio"/>	<input type="radio"/>	<input type="radio"/>	<input type="radio"/>	<input type="radio"/>	<input type="radio"/>	<input type="radio"/>	<input type="radio"/>	<input type="radio"/>	<input type="radio"/>	<input type="radio"/>	<input type="radio"/>	<input type="radio"/>	
Tagged	ALL	<input type="radio"/>	<input type="radio"/>	<input type="radio"/>	<input type="radio"/>	<input type="radio"/>	<input type="radio"/>	<input type="radio"/>	<input type="radio"/>	<input type="radio"/>	<input type="radio"/>	<input type="radio"/>	<input type="radio"/>	<input type="radio"/>	
Non-member	ALL	<input checked="" type="radio"/>	<input checked="" type="radio"/>	<input checked="" type="radio"/>	<input checked="" type="radio"/>	<input checked="" type="radio"/>	<input checked="" type="radio"/>	<input checked="" type="radio"/>	<input checked="" type="radio"/>	<input checked="" type="radio"/>	<input checked="" type="radio"/>	<input checked="" type="radio"/>	<input checked="" type="radio"/>	<input checked="" type="radio"/>	

Add / Modify

VLAN	VLAN Name	Member port	Tagged port	Untagged port	Delete
1	Default VLAN	1-26	-	1-26	<input type="checkbox"/>

Delete Select All

Interface data are as follows

Configuration Items	Description
VLAN	It ranges from 2 to 4094
VLAN Name	VLAN name description

5.2 QOS

QoS (Quality of Service) assesses the ability of service providers to meet customer needs and the ability of transmitting packets over the Internet. Diversified services can be assessed based on different aspects. QoS usually refers to the evaluation of service capabilities that support core requirements such as bandwidth, delay, delay variation, and packet loss rate during delivery. Bandwidth, also known as throughput, refers to the average business flow within a certain period of time, with the unit of Kbit/s. Delay refers to the average time required for business flowing through the network. For a network device, the followings are general levels of delay requirements. There are two delay levels, that is, the high-priority business can be served as soon as possible by scheduling method of priority queue, while the low-priority business gets services after that. Delay variation refers to the time change of business flowing through the network. Packet loss rate refers to the percentage of lost business flow during transmission. As modern transmission systems are very reliable, information is often lost in network congestion. Packet loss due to queue overflow is the most common situation.

All messages in a traditional IP network are treated equally. Every network device processes the messages on a FIFO basis, and makes every effort to transmit them to destinations without guaranteeing reliability, transfer delay, or other performance.

Network service quality is constantly improved as new applications keep springing up in the rapidly changing IP network. For example, VoIP, video and other delay-sensitive

services have set higher standards on message transmission delay. Message transmission in a short period has been the common trend. In order to support voice, video and data services with different requirements, the network needs to identify business types and provide corresponding services.

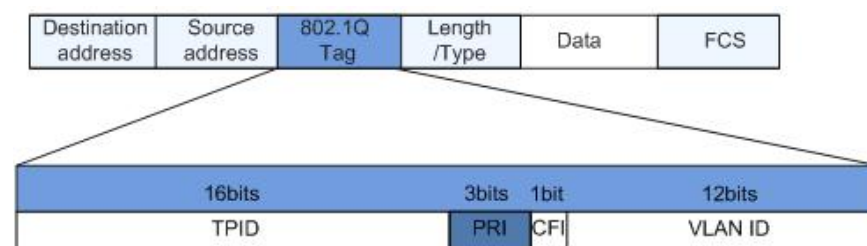
The ability to distinguish business types is the prerequisite to provide corresponding services, so the traditional best-effort service no longer meets the application needs. Therefore, QoS comes into being. It regulates the network flow to avoid and handle network congestion and reduce packet loss rate. Meanwhile, users can enjoy dedicated bandwidths while business can improve service quality, thus perfecting the network service capacity.

QoS priorities vary with message types. For instance, the VLAN message uses 802.1p, also known as the CoS (Class of Service) field, while the IP message uses DSCP. To maintain the priority, these fields need to be mapped at the gateway connected with various networks when messages flow through the network.

802.1p priority in the VLAN frame header

Typically, VLAN frames are interacted between Layer 2 devices. The PRI field (i.e. 802.1p priority), or CoS field, in the VLAN frame header identifies the quality of service requirements according to the definitions in IEEE 802.1Q.

802.1p priority in the VLAN frame

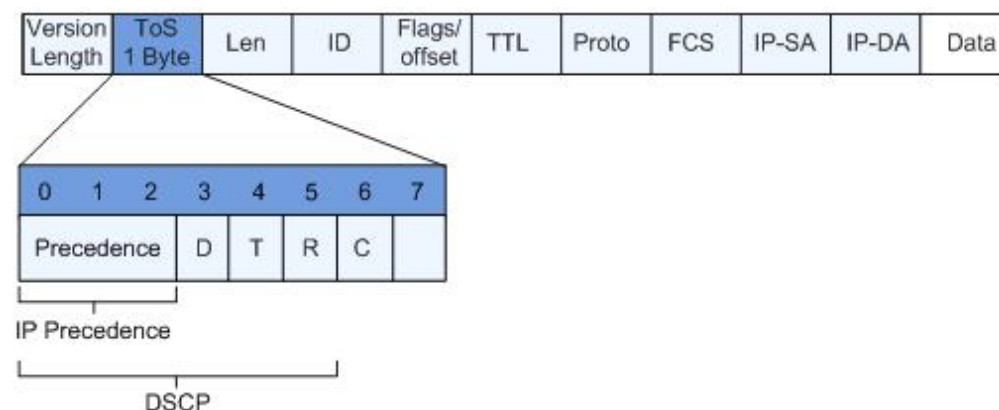


The 802.1Q header contains 3-bit PRI fields. PRI field defines 8 CoS of business priority ranging from 7 to 0 from high to low.

IP Precedence/DSCP Field

According to RFC791 definition, ToS (Type of Service) domain in the IP message header is composed of 8 bits. Among them, the 3-bit long Precedence field, as located in the following, identifies the IP message priority.

IP Precedence/DSCP Field



0 to 2 bits are Precedence fields representing the 8 priorities of message transmission ranging from 7 to 0 from high to low, with either Level 7 or 6 as the highest priority that is generally reserved for routing or updating network control communication. User-level applications only have access to Level 0 to 5.

ToS domain, in addition to Precedence fields, also includes D, T and R bits: D-bit represents the Delay requirement (0 for normal delay and 1 for low delay). T-bit represents the throughput (0 for normal throughput and 1 for high throughput). R-bit represents the reliability (0 for normal reliability and 1 for high reliability). ToS domain reserves the 6 and 7 bits.

RFC1349 redefines the ToS domain by adding a C-bit to represent the Monetary Cost. The IETF DiffServ group then redefines the 0 to 5 bits of ToS domain in the IPv4 message header of RFC2474 as DSCP and renames it as DS (Differentiated Service) byte as shown in the figure above.

The first 6 bits (0–5 bits) of DS field distinguish the DSCP (DS Code Point), and the higher 2 bits (6–7 bits) are reserved. The lower 3 bits (0–2 bits) are CSCP (Class Selector Code Point), with the same CSCP value representing the DSCP of the same class. DS nodes select corresponding PHB (Per-Hop Behavior) according to DSCP values.

5.2.1 Port to Queue

Set processing priority for different tags of data frames

1. Click the “Configuration > QOS >Port to Queue”, in the navigation bar as follows:

Port to Queue

PORT

Port 1
Port 2
Port 3
Port 4
Port 5
Port 6

Queue

1

Apply

PORT	Queue
Port 1	1
Port 2	1
Port 3	1
Port 4	1
Port 5	1
Port 6	1
Port 7	1
Port 8	1
Port 9	1
Port 10	1

Interface data are as follows

Configuration Items	Description
Queue	Priority range 1 to 8

5.2.2 Queue Weight

Values with weights of 1–15 are equivalent to WRR (weighted cycle scheduling algorithm)

1. Click the “Configuration > QOS > Queue Weight”, in the navigation bar as follows:

Queue weight

Queue	Weight
1	
2	
3	
4	
5	
6	
7	
8	

Strict priority ▼

Queue	Weight
1	Strict priority
2	Strict priority
3	Strict priority
4	Strict priority
5	Strict priority
6	Strict priority
7	Strict priority
8	Strict priority

Interface data are as follows.

Configuration Items	Description
Priority	The default value is strict priority(SP). The weight ranges from 1 to 15(WRR)

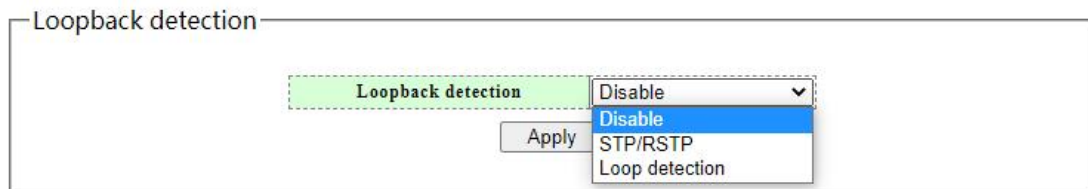
5.3 Loop

The device sends loop detection packets and checks whether the packets are returned to the device (the receiving and sending ports do not need to be the same) to check whether loops exist. If a port receives a loop detection packet from the local device, the link to the port is identified as having a loop. When a loop occurs on the network, the LED indicator of the corresponding port blinks. In this way, the network administrator can release the loop on the port

5.3.1 Loop Prevention

Instructions:

1. Click the "Configuration > Loop > Loop Prevention", in the navigation bar as follows:



Interface data are as follows.

Configuration Items	Description
Loop function	Enable of disable Loop prevention/Spanning Tree Protocol

5.3.2 STP global

Fast spanning tree protocol (RSTP) is used to eliminate the physical loop of data link layer in LAN. Its core is fast spanning tree algorithm. RSTP is fully downward compatible with STP protocol. In addition to the functions of avoiding loops and dynamically managing redundant links like the traditional STP protocol, RSTP greatly shortens the topology convergence time. Under the ideal network topology scale, all switching devices support RSTP protocol, and when configured properly, the time to restore stability after topology changes (link up / down) can be controlled at the second level. The main functions of RSTP can be summarized as follows:

- 1、 Discover and generate an optimal tree topology of LAN;
- 2、 Discover and recover the topology failure, automatically update the network topology, enable the backup link, and maintain the best tree structure;

Instructions:

1. Click the "Configuration > STP global", in the navigation bar as follows:

Spanning Tree Setting

Spanning Tree Status	Disabled	
Force Version	RSTP	▼
Priority	32768	▼
Maximum Age	20	(6~40 Sec)
Hello Time	2	(1~10 Sec)
Forward Delay	15	(4~30 Sec)
Root Priority	32768	
Root MAC Address	00:E0:4C:00:00:00	
Root Path Cost	0	
Root Port	None	
Root Maximum Age	20 Sec	
Root Hello Time	2 Sec	
Root Forward Delay	15 Sec	

Apply

Interface data are as follows.

Configuration Items	Description
Force Version	Configure view STP mode
Maximum Age	Configure view maximum age time
Hello Time	Configure view Hello time
Forward Delay	Configure and view forwarding delay time

5.3.3 STP port

Instructions:

1. Click the "Configuration >STP port", in the navigation bar as follows:

Spanning Tree Port Setting

Port	Path Cost	Priority	P2P	Edge
Port 1				
Port 2				
Port 3				
Port 4				
Port 5				
Port 6				

0 (1~200000000), 0=Auto

128

Auto

False

Apply

Port	State	Role	Path Cost		Priority	P2P		Edge	
			Config	Actual		Config	Actual	Config	Actual
Port 1	Forwarding	Disabled	Auto	200000000	128	Auto	TRUE	False	False
Port 2	Forwarding	Disabled	Auto	200000000	128	Auto	TRUE	False	False
Port 3	Forwarding	Disabled	Auto	200000000	128	Auto	TRUE	False	False
Port 4	Forwarding	Disabled	Auto	200000000	128	Auto	TRUE	False	False
Port 5	Forwarding	Disabled	Auto	20000	128	Auto	TRUE	False	False
Port 6	Forwarding	Disabled	Auto	200000000	128	Auto	TRUE	False	False
Port 7	Forwarding	Disabled	Auto	200000000	128	Auto	TRUE	False	False
Port 8	Forwarding	Disabled	Auto	200000000	128	Auto	TRUE	False	False
Port 9	Forwarding	Disabled	Auto	200000000	128	Auto	TRUE	False	False
Port 10	Forwarding	Disabled	Auto	200000000	128	Auto	TRUE	False	False
Port 11	Forwarding	Disabled	Auto	200000000	128	Auto	TRUE	False	False
Port 12	Forwarding	Disabled	Auto	200000000	128	Auto	TRUE	False	False
Port 13	Forwarding	Disabled	Auto	200000000	128	Auto	TRUE	False	False
Port 14	Forwarding	Disabled	Auto	200000000	128	Auto	TRUE	False	False
Port 15	Forwarding	Disabled	Auto	200000000	128	Auto	TRUE	False	False

Interface data are as follows.

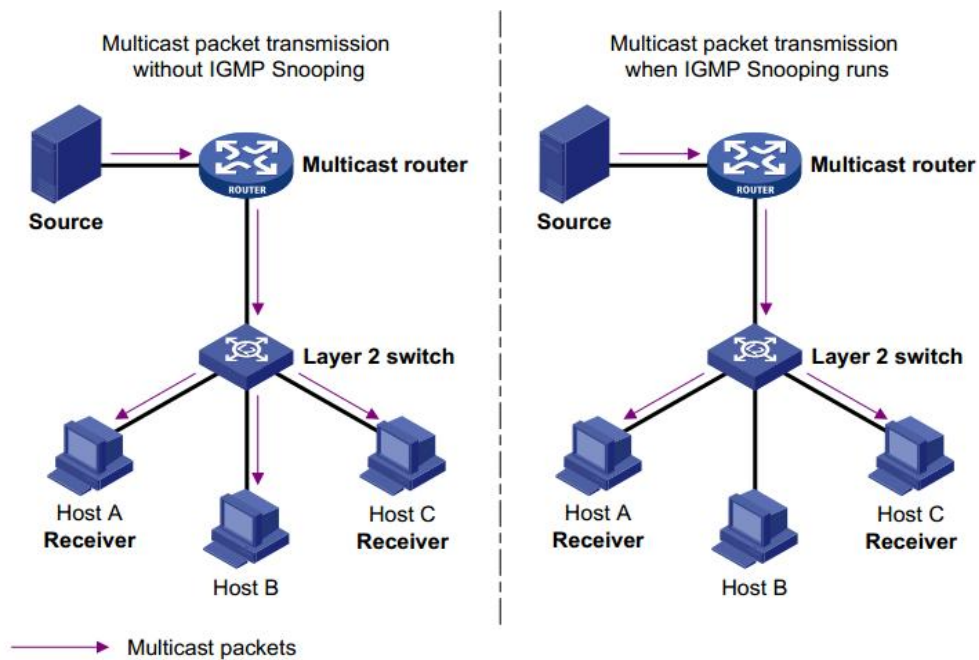
Configuration Items	Description
Path Cost	Configure view port path Cost
Priority	Configure view port priority
P2P	Configure and view P2P
Edge	Configure view edge ports

5.4 IGMP Snooping

IGMP Snooping (Internet Group Management Protocol Snooping) is a constraint mechanism on L2 devices to manage and control multicast groups.

By analyzing the IGMP messages received, L2 devices establish a mapping between ports and MAC multicast addresses and forward the multicast data accordingly.

As shown below, multicast data are transmitted on L2 without IGMP snooping. When IGMP snooping runs, known multicast group data are transmitted to specified receivers while unknown multicast data are still on Layer 2.



Instructions:

1. Click the "Configuration > IGMP Snooping", in the navigation bar as follows:

IGMP Enable Setting

☒ Enable ☐

Apply

Dump IGMP entry

IP Address	Ports	Vid
------------	-------	-----

Interface data are as follows.

Configuration Items	Description
Enable	Enable or disable the IGMP Snooping
Dump IGMP entry	Display multicast group entries

5.5 SNMP

SNMP simple network management protocol is a standard protocol specially designed to manage network nodes (servers, workstations, routers, switches and hubs) in IP network. It is an application layer protocol.

Instructions:

1. Click the "Configuration > SNMP", in the navigation bar as follows:

SNMP Setting

SNMP function	Disable ▼
Trap IP Address	192.168.2.254
Read Community	public
Write Community	private

Apply

Interface data are as follows.

Configuration Items	Description
SNMP function	Enable or disable SNMP function
Trap IP Address	Network management node IP
Read Community	Download and view node configuration information password
Write Community	Upload and execute node configuration command password

5.6 Trunk Group Setting

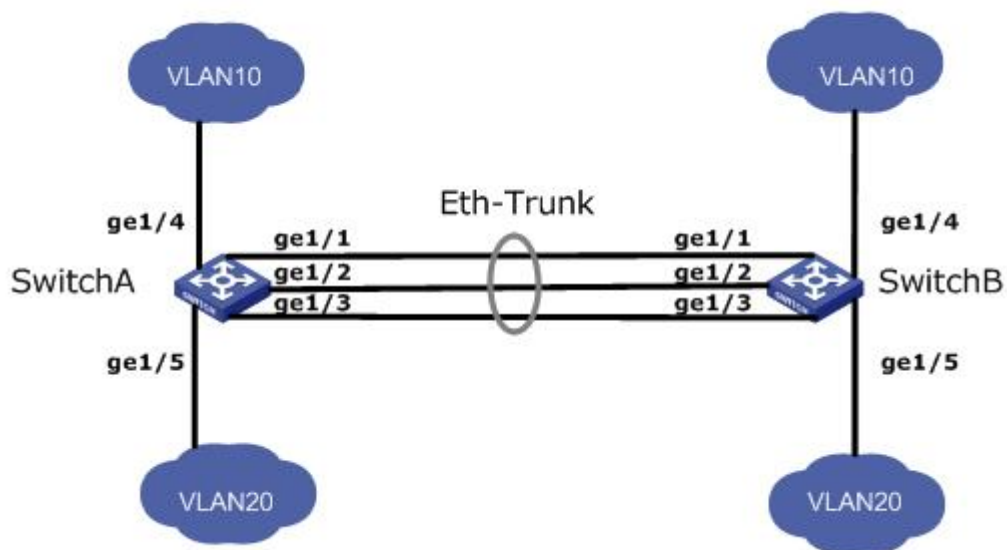
Link Aggregation broadens bandwidth and reliability by bundling a group of physical interfaces into a single logical interface.

LAG (Link Aggregation Group) is a logical link bundled by multiple Ethernet links (Eth-Trunk).

Ceaselessly expanding network size increases users' demands of link bandwidth and reliability. Traditionally, high-speed interface board or the compatible equipment is usually replaced to optimize bandwidth, which is expensive and inflexible.

Link Aggregation Technology bundles multiple physical interfaces into a single logical interface without upgrading hardware. Its backup mechanism not only improves reliability, but also shares the flow load on different physical links.

As shown below, Switch A is linked with Switch B through three Ethernet links which are bundled into an Eth-Trunk logical link. Its bandwidth equals to that of the three links in total, thus broadening the bandwidth. Meanwhile, these three links back up mutually to be more reliable.



Instructions:

1. Click the "Configuration > Trunk Group Setting", in the navigation bar as follows:

Trunk Setting

Trunk ID	Port ID
Trunk 1	Port 1 Port 2 Port 3 Port 4 Port 5 Port 6

Add / Modify

Trunk ID	Port ID	Select

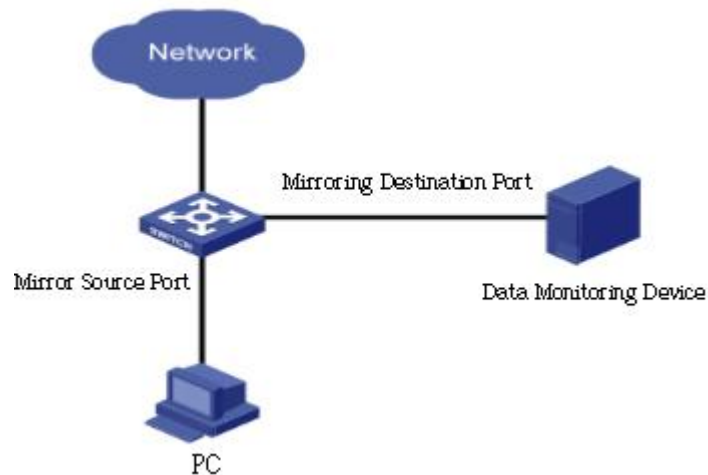
Delete SelectAll

Interface data are as follows

Configuration Items	Description
Trunk ID	There are 1 LAGs numbering from 1 to 4.
Ports	Up to 8 member ports are available in LAG.

5.7 Port-based Mirroring

Port Mirroring copies the message of a specified switch port to the destination port. The copied port is the Source Port, and the copying port is the Destination Port. Destination Port accesses to data inspection devices so that users can analyze the messages received to monitor network and troubleshoot as follows:



Instructions:

1. Click the "Configuration > Port-based Mirroring", in the navigation bar as follows:

Port Mirroring Setting

Mirror Direction	Mirroring Port	Mirrored Port List
Disable	Port 1	Port 1

Apply

Mirror Direction	Mirroring Port	Mirrored Port List
Disabled	-	-

Delete

Interface data are as follows

Configuration Items	Description
Mirror Direction	Enable or disable port mirroring, support Rx, Tx, and Both
Mirroring Port	Only one ordinary physical port can be selected, excluding link aggregation port and source port.
Mirrored Port List	List of mirrored source ports

5.8 Port Isolation

Messages of broadcast, multicast, etc. will flood at each port even though the flow needs no mutual communication sometimes. Under this circumstance, port isolation can separate the messages between two ports.

Instructions:

1. Click the “Configuration > Port Isolation”, in the navigation bar as follows:

Port Isolation Setting

Port	Forwarding port
Port 1	Port 1
Port 2	Port 2
Port 3	Port 3
Port 4	Port 4
Port 5	Port 5
Port 6	Port 6

Apply

Port	Forwarding port
Port 1	1-26
Port 2	1-26
Port 3	1-26
Port 4	1-26
Port 5	1-26
Port 6	1-26
Port 7	1-26
Port 8	1-26
Port 9	1-26

Interface data are as follows

Configuration Items	Description
Port	Port list
Port Isolation List	Establish the member list of interworking group

5.9 Bandwidth Control

Configuring interface rate limiting limits the rate at which a physical interface sends data. Before the traffic is sent from the interface, you can configure rate limiting on the outbound direction of the interface to control the outgoing packet traffic.

Instructions:

1. Click the “Configuration > Bandwidth Control”, in the navigation bar as follows:

Egress Bandwidth

PORT	STATUS	RATE(Kbit/sec)
Port 1		
Port 2		
Port 3	Disable	Unlimited
Port 4		
Port 5		
Port 6		

(16-1000000, multiple of 16)

Apply

Port	RATE (Kbit/sec)
Port 1	Unlimited
Port 2	Unlimited
Port 3	Unlimited
Port 4	Unlimited
Port 5	Unlimited
Port 6	Unlimited
Port 7	Unlimited
Port 8	Unlimited
Port 9	Unlimited
Port 10	Unlimited

Interface data are as follows

Configuration Items	Description
State	Enable or de enable port restrictions
Rate	Rate limit, range: 16 to 1000000 kbit

5.10 Jumbo Frame

Set the MTU (Maximum Transmission Unit) of the port

Instructions:

1. Click the "Configuration >Jumbo Frame", in the navigation bar as follows:

Jumbo frame

Jumbo frame(Bytes)	9216
--------------------	------

Apply

Interface data are as follows

Configuration Items	Description
Jumbo Frame	Set the MTU of the port

5.11 MAC Constraint

MAC address learning limit of port

Instructions:

- 1. Click the “Configuration > MAC Constraint”, in the navigation bar as follows:

MAC Limit Setting

PORT	STATUS	Limit number
Port 1		
Port 2		
Port 3		
Port 4	Disable	Unlimited (0-8,192)
Port 5		
Port 6		

Apply

PORT	Limit number
Port 1	Unlimited
Port 2	Unlimited
Port 3	Unlimited
Port 4	Unlimited
Port 5	Unlimited
Port 6	Unlimited
Port 7	Unlimited
Port 8	Unlimited
Port 9	Unlimited
Port 10	Unlimited

Interface data are as follows.

Configuration Items	Description
State	Enable or disable MAC constraint
Entry Limits	Limited number of MAC address learning

5.12 EEE

- 1. Click the “Configuration > EEE”, in the navigation bar as follows:

EEE Setting

EEE function

Disable

Apply

6 Security

6.1 MAC Address

Ethernet switches are mainly innovated to forward according to the purposes in the data link layer. That is, MAC address will transmit the messages to corresponding ports according to the purposes. MAC address forwarding table is a L2 table illustrating MAC addresses and forwarding ports, which is the basis of fast forwarding of L2 messages.

MAC address forwarding table contains following data:

- Destination MAC Address
- VLAN ID belonging to port
- Forwarding ingress No. of this device

There are two message forwarding types according to MAC address table info:

- Unicast mode: the switch directly transmits the messages from the table's egress when MAC address forwarding table contains corresponding entries with the destination MAC address.
- Broadcast mode: When the switch receives the messages with the destination address full of F-bits, or there is no entry corresponding to the MAC destination address in the forwarding table, the switch will forward the messages to all ports excluding the receiving port in this way.

6.1.1 MAC Search

On this page, you can view information about the MAC address table. To adapt to network changes, the MAC address table needs to be constantly updated. The automatically generated entries in the MAC address table are not always valid. Each entry has a lifetime. If the entries are not refreshed within the lifetime, they are deleted. If a record is refreshed before the lifetime is reached, the aging time of this entry is recalculated.

1. Click the "Security > MAC Address > MAC Search", in the navigation bar as follows:

MAC Address			
MAC	VLAN	TYPE	PORT
00:0E:C6:3C:0E:1F	1	Dynamic	Port 5



Notice: MAC lookup shows that the wait process will interrupt communication with the device

6.1.2 Static MAC

Static entries are manually configured and delivered to each interface board. The entries do not age. On this page, you can filter the source and destination MAC addresses. After the configuration, all ports take effect

Instructions:

1. Click the "Security > MAC Address > Static MAC", in the navigation bar as follows:

Static MAC Setting

MAC Address	VLAN ID	Source MAC Filter	Destination MAC Filter	PORT
00:00:00:00:00:00	<input type="text"/> (1~4094)	No ▼	No ▼	<div> Port 1 Port 2 Port 3 Port 4 Port 5 Port 6 </div>

No.	MAC Address	VLAN ID	Source MAC Filter	Destination MAC Filter	PORT	Select
<input type="button" value="Delete"/>						

Interface data are as follows.

Configuration Items	Description
MAC Address	Enter the new MAC address e.g.: HH:HH:HH:HH:HH:HH
VLAN ID	Specify the VLAN ID
Source MAC Filter	Enable or disable MAC address filtering
Destination MAC Filter	Enable or disable MAC address filtering
Port	Static MAC binding port list

6.2 Storm Control

Storms generated via broadcast, unknown multicast and unicast messages are prevented as follows. These messages will be suppressed subject to packet rates respectively. The average rate of the messages received by monitoring interfaces will be compared with the max threshold configured during an inspection interval. Configured storm policing will be performed at this interface if the average rate exceeds the max threshold.

When a L2 Ethernet interface receives the broadcast, unknown multicast or unicast messages, the device will forward them to other L2 interfaces in a same VLAN (Virtual Local Area Network) if the egress interface cannot be recognized according to destination MAC addresses. As a result, broadcast storm may occur to degrade device operation performance.

Three kinds of message flow can be controlled by storm policing characteristics to stay

away from broadcast storms.

Instructions:

1. Click the "Security > Storm Control", in the navigation bar as follows:

Storm Control Setting

PORT	STATUS	RATE(16kbps)	TYPE
Port 1	Disable ▼	<input type="text" value=""/> (0-62500)	UnKnown unicast UnKnown multicast Broadcast
Port 2			
Port 3			
Port 4			
Port 5			
Port 6			

Apply

PORT	RATE(16kbps)	TYPE
Port 1	Disable	
Port 2	Disable	
Port 3	Disable	
Port 4	Disable	
Port 5	Disable	
Port 6	Disable	
Port 7	Disable	
Port 8	Disable	
Port 9	Disable	
Port 10	Disable	
Port 11	Disable	

Interface data are as follows.

Configuration Items	Description
Storm Type	The storm type, like Broadcast, Multicast, Unicast
Port	Port list
Status	Enable or disable storm control
Rate	Rate ranges from 16 to 1,000,000 Kbps

7 Monitoring

7.1 Port Statistics

Display port statistics information.

Instructions:

1. Click the "Monitoring > Port Statistics", in the navigation bar as follows:

port statistics

PORT	STATUS	LINK STATUS	TX packet	TX error packet	RX packet	RX error packet
Port 1	Enable	Down	0	0	0	0
Port 2	Enable	Down	0	0	0	0
Port 3	Enable	Up	1474	0	1660	0
Port 4	Enable	Down	0	0	0	0
Port 5	Enable	Down	0	0	0	0
Port 6	Enable	Down	0	0	0	0
Port 7	Enable	Down	0	0	0	0
Port 8	Enable	Down	0	0	0	0
Port 9	Enable	Down	0	0	0	0
Port 10	Enable	Down	0	0	0	0
Port 11	Enable	Down	0	0	0	0
Port 12	Enable	Down	0	0	0	0

Interface data are as follows.

Configuration Items	Description
Port	Port list
Status	Switch status of the port
Link Status	Link status of the port
Tx packet	Send normal packet statistics
Tx error packet	Send bad packet statistics
Rx packet	Received normal packet statistics
Rx error packet	Received bad packet statistics

8 Tool

8.1 Firmware Upgrade

System version firmware upgrade

Instructions:

1. Click the "Tool > Firmware Upgrade", in the navigation bar as follows:





Notice: After clicking OK, please do not power off during the upgrade process, Stay on the upgrade page, do not operate. wait for about 3 minutes for the upgrade to complete

8.2 Configuration Backup

System configuration upgrade or backup

Instructions

1. Click the “Tool > Configuration Backup”, in the navigation bar as follows:

Configuration Backup

Backup

Configuration Restore

选择文件

未选择任何文件

Restore

Interface data are as follows.

Configuration Items	Description
Backup	Backup configuration
Restore	Upload configuration

8.3 Reset

Restore factory settings

Instructions

1. Click the “Tool > Reset”, in the navigation bar as follows:

Restore factory default

Factory reset and reboot the system.

Restore

8.4 Save

Instructions

1. Click the “Tool > Save”, in the navigation bar as follows:

Save configuration

Save configuration to flash.

Save

8.5 Reboot

Restart the system.

Instructions

1. Click the “Tool > Reboot”, in the navigation bar as follows:

Reboot

Reboot Switch

Reboot